


An aerial photograph showing a coastal plain with green fields, some buildings, and a large body of water (likely a bay or lake) on the right side. The sky is clear and blue.

Heretaunga Plains Urban Development Strategy (HPUDS)

» STAKEHOLDER GROUP
IMPLEMENTATION WORKSHOP

15 October 2012
at Napier City Council

Format

- ▶ Welcome
 - ▶ HPUDS – a refresher
 - ▶ Overview of Implementation Programme
 - ▶ Key projects for 2012–15
 - ▶ Q and A session
- 

HPUDS – a Refresher



HERETAUNGA PLAINS URBAN DEVELOPMENT STRATEGY



HASTINGS
DISTRICT
COUNCIL




CITY OF
NAPIER



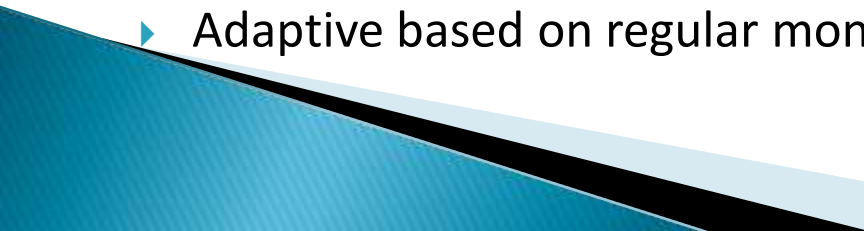
HAWKE'S BAY
REGIONAL COUNCIL

Adopted August 2010

What HPUDS is:

- ▶ Joint initiative between HDC, NCC and HBRC to plan for urban development on the Heretaunga Plains and surrounds.
 - ▶ Previous urban development planning has been done independently.
 - ▶ The current Hastings and Napier Urban Development Strategies cater for urban growth until 2015-21.
 - ▶ HPUDS will pick up from 2015 and project urban development needs for the next 30 years and beyond.
- 

What HPUDS does:

- ▶ Ensures that local authorities work together to plan for growth on the Heretaunga Plains and surrounds
 - ▶ Considers infrastructure, social, cultural and environmental network requirements that are part of the urban fabric
 - ▶ Recognises the value of the Heretaunga Plains soil resource
 - ▶ Considers global influences such as peak oil and climate change
 - ▶ Focuses on urban centres, but includes coastal and peripheral communities
 - ▶ Identifies the settlement pattern for 2015-2045
 - ▶ Adaptive based on regular monitoring and reviews
- 

What area does HPUDS cover?


- ↔ The Heretaunga Plains - including the small rural settlements on the fringes such as Maraekakaho, Puketapu and Paki Paki.
- ↔ The coastal settlements of Waimarama, Ocean Beach, Te Awanga and Haumoana.
- ↔ Waipatiki on the northern boundary and Te Hauke on the Southern Boundary also fall into the study area.




What makes the Plains special?

- ▶ Strengths of the Heretaunga Plains lies in the:
 - The high value and versatility of the soils
 - Good water supply
 - Temperate climate
 - The industrial base of the agriculture and horticulture sectors

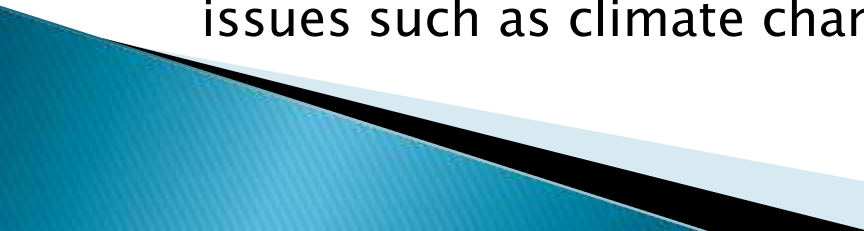
How residential growth has been dealt with over the last 20 years...

- ▶ Characterised by single dwelling greenfields subdivision
 - ▶ Often on flat and lightly sloping elevated sites; including on productive land
 - ▶ Intensification has been through 1:2 infill developments
 - ▶ Rural residential sites are of a higher value than equivalent production blocks, pushing up demand for lifestyle sites
- 

What the research told us we needed to plan for...

- ▶ 8000 additional households
 - ▶ A 6.3% population increase
 - ▶ A 68% increase in the aging population 65 years plus
 - ▶ A decline in all other age groups
 - ▶ A 25% increase in the Maori population
 - ▶ Continued primary sector led employment growth
- 

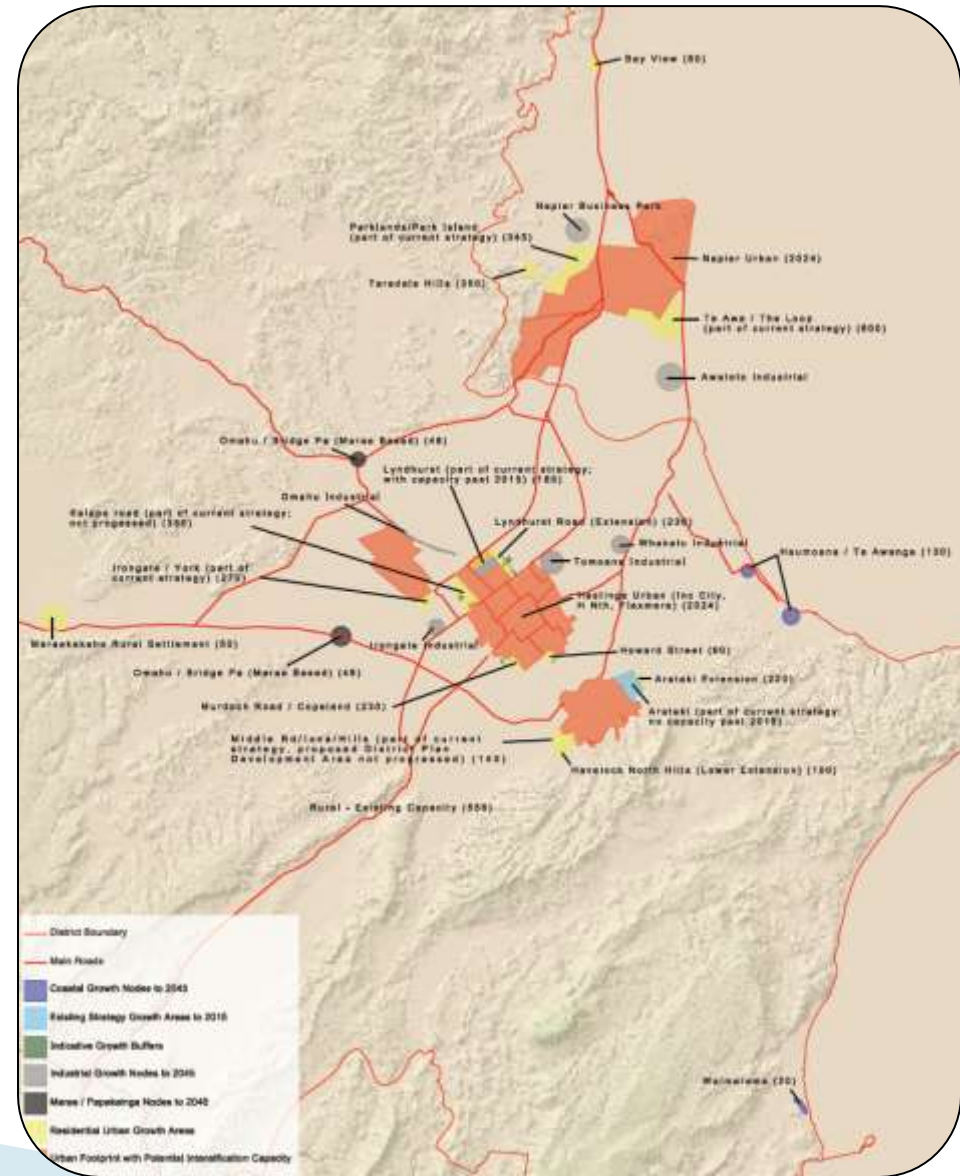
Key drivers behind HPUDS

- ▶ Community recognition that both the soils and water resource are finite and under increasing pressure and should be better managed.
 - ▶ The need to take a sub regional view to the growth needs over a longer period of time for balanced growth.
 - ▶ The need to identify where the knowledge gaps are in planning for the long term growth.
 - ▶ Accepting that the employment base of the Heretaunga Plains will continue to rely on land based industry.
 - ▶ Establishing appropriate and planned responses to long term issues such as climate change and energy efficiencies.
- 

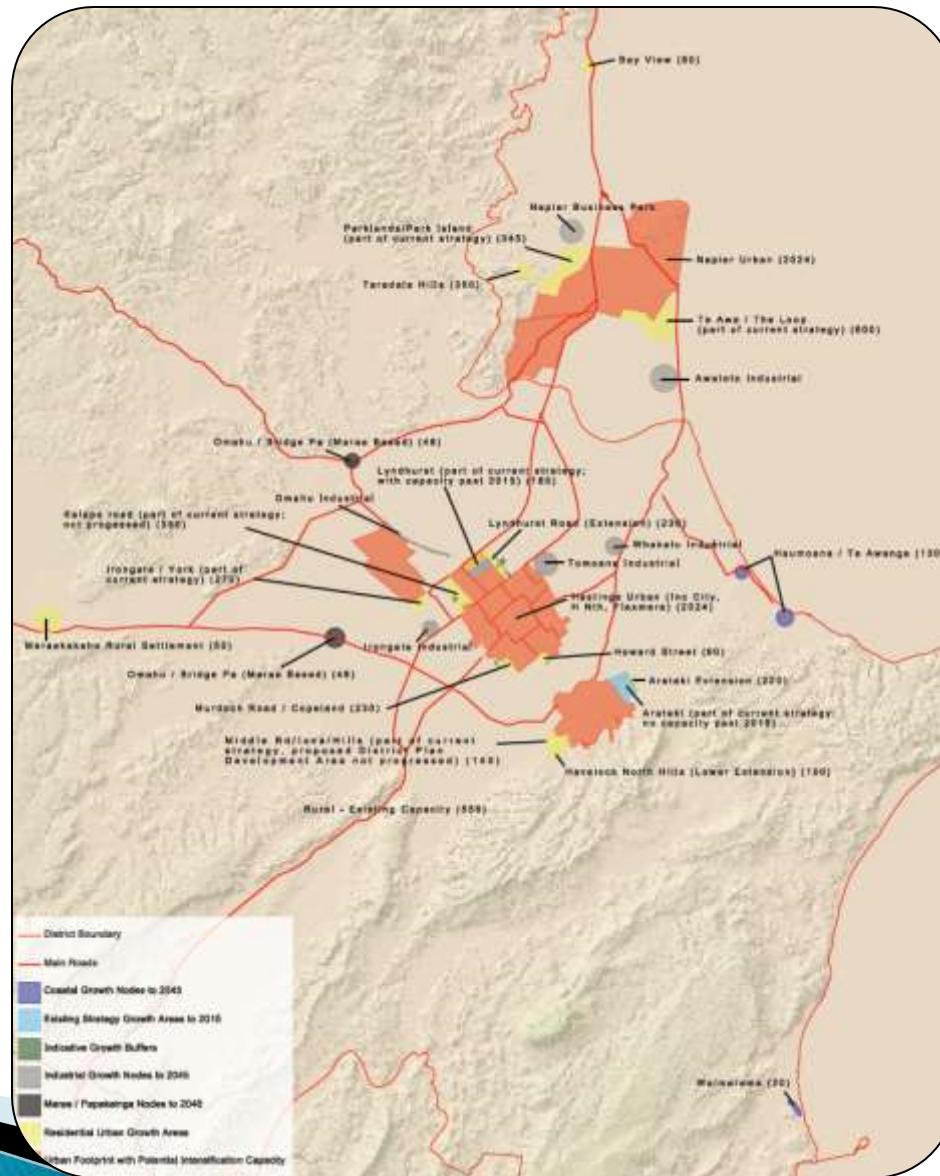
HPUDS Settlement Pattern

Transitioning to a compact form

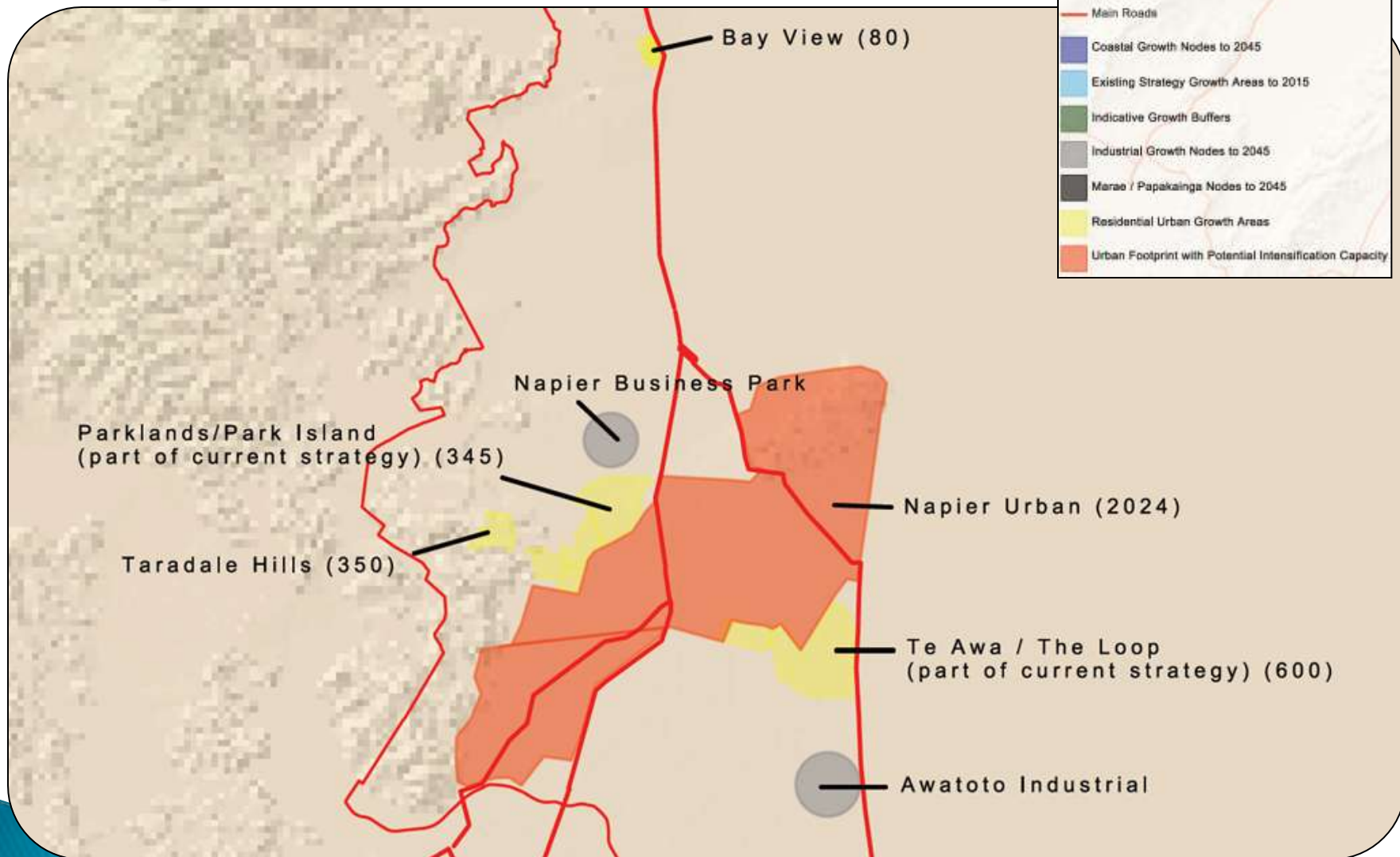
- ▶ Targets over a 30 year period:
 - 60% will be in medium density or intensified housing,
 - 35% will be in Greenfield development areas, and
 - 5% will be in the rural residential sites.



The HPUDS Settlement Map

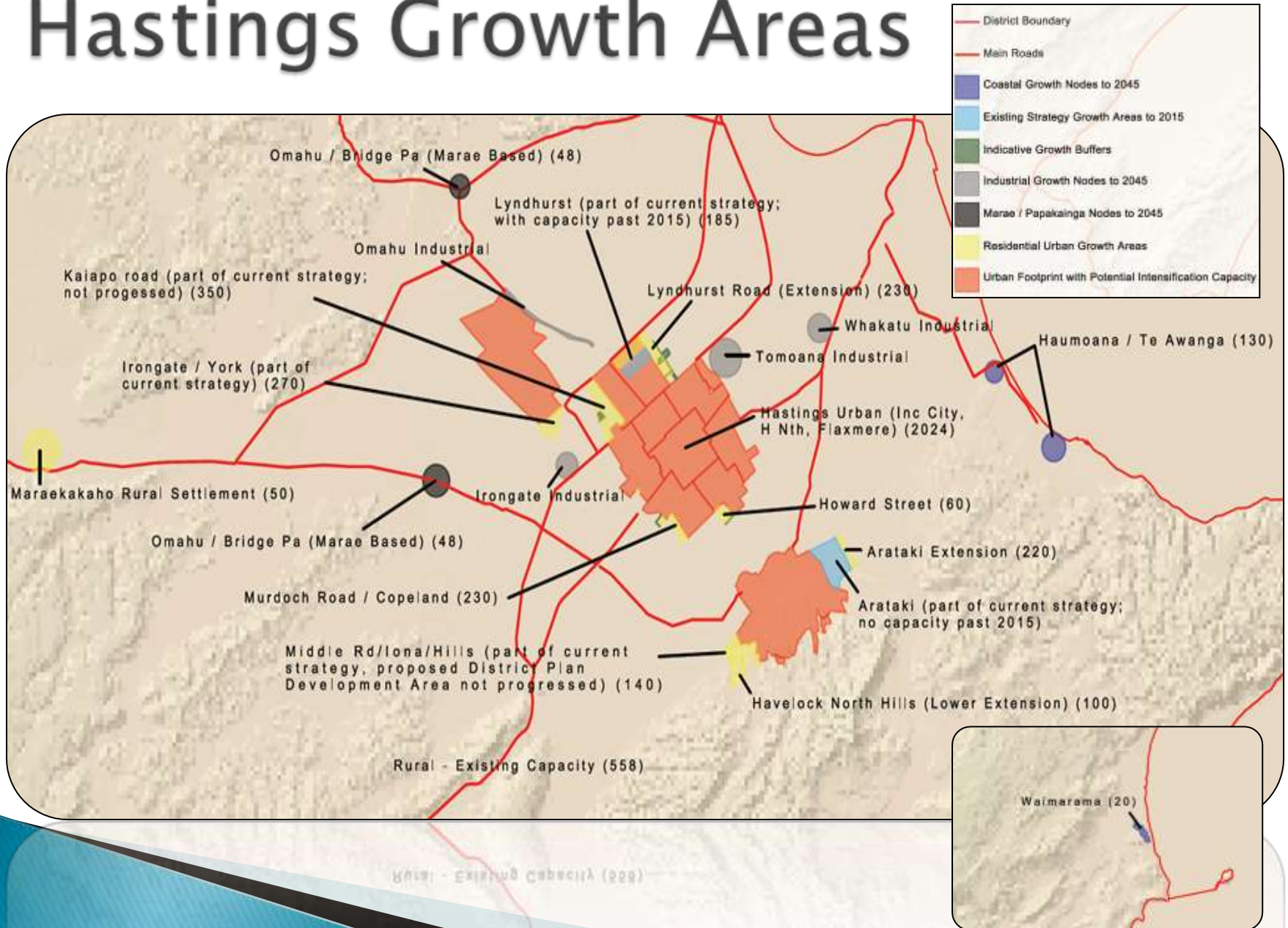


Napier Growth Areas



Awatoto Industrial

Hastings Growth Areas



Timing

Hastings	2016-2046	2021	2026	2031	2036	2041	2046	% Full
Greenfields	1934	499	524	381	273	148	110	
Lyndhurst	208	208						100.00
Lyndhurst Road	230		230					100.00
Howard Street	80			80				100.00
Kaiapo Road	300	31	112	157				100.00
Murdoch Road / Copeland	230			79	131			91.30
Irongate / York	270				82	98	69	92.22
Arataki	0							
Arataki Extension	220	220						100.00
Middle Road / Iona / Hills	140		140					100.00
Havelock North Hills	100			25	25	25	25	100.00
Omahu (marae based)	24		6	5	5	5	3	100.00
Bridge Pa (marae based)	24		6	5	5	5	3	100.00
Total	1826	459	494	351	248	133	100	1785

Timing

Hastings	2016-2046	2021	2026	2031	2036	2041	2046	% Full
<i>Coastal</i>								
Waimarama	20	5	5	5	5			100
Te Awanga / Haumoana	130	35	25	25	20	15	10	100
<i>Total</i>	150	40	30	30	25	15	10	150
<i>Total Greenfields/Coastal</i>	1976	499	524	381	273	148	110	1935

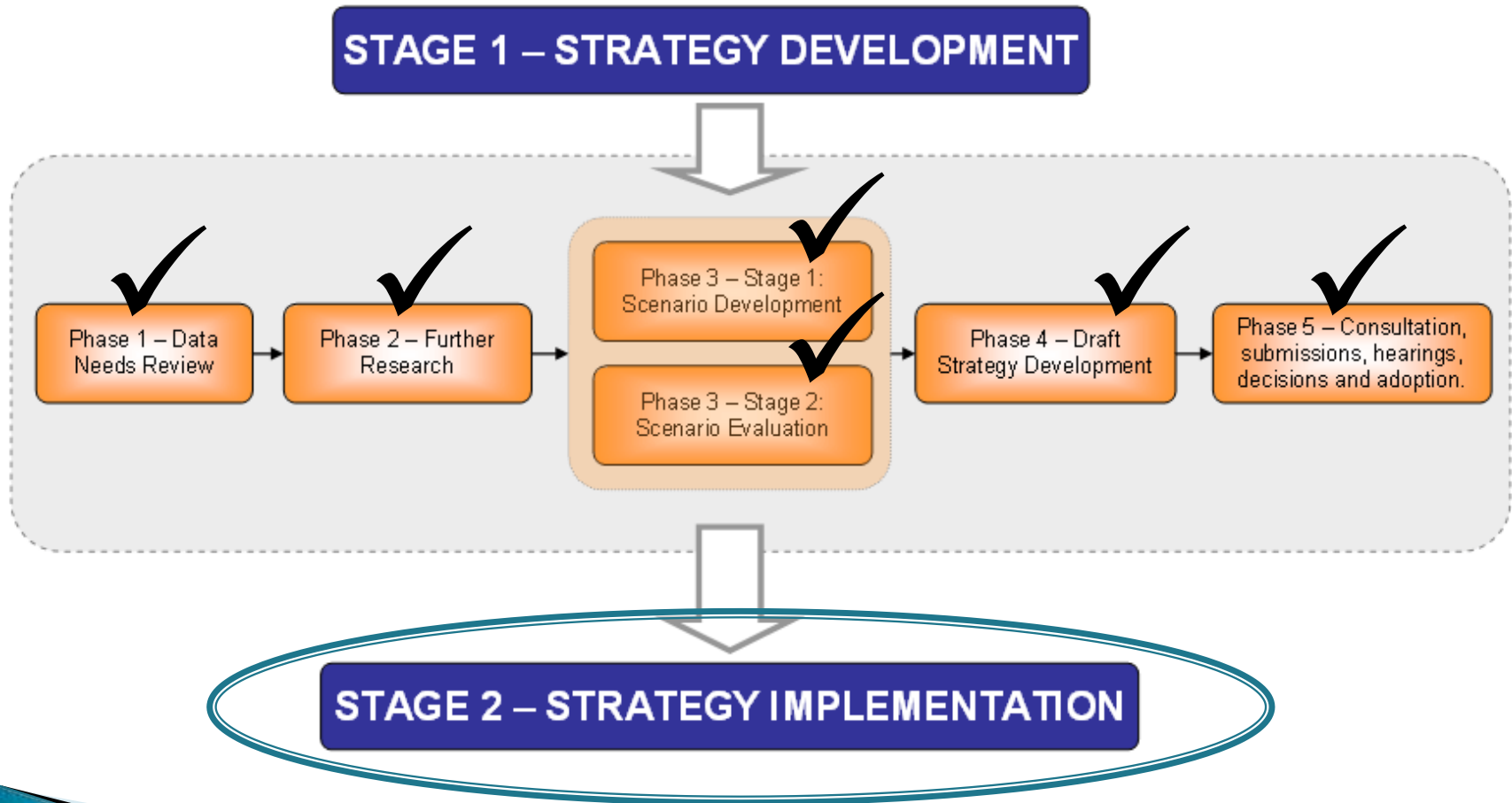
Timing

Napier	2016-2046	2021	2026	2031	2036	2041	2046	
Greenfields		333	349	254	182	98	73	1289
Parklands/Park Island	250	150	100					100.00
Park Island	80	50	30					100.00
Taradale Hills	345	10	29	32	22	9	3	30.43
Te Awa	962	123	180	212	150	79	60	83.58
The Loop	350							0.00
Riverbend	258							0.00
Total	1987	333	339	244	172	88	63	1239

Timing


Napier	2016-2046	2021	2026	2031	2036	2041	2046	
<i>Coastal</i>								
Bayview	80	0	10	10	10	10	10	62.50
<i>Total Greenfields/Coastal</i>	2067	333	349	254	182	98	73	1289
Total Study Area	4043	832	873	635	455	246	183	3224

Where are we up to?




Implementation Programme

Themes

- ▶ Managing implementation
 - ▶ Planning for and delivering on the settlement pattern
 - ▶ Building supportive infrastructure
 - ▶ Creating healthy living environments
 - ▶ Protecting and enhancing natural systems
 - ▶ Adapting to change and dealing with risk
 - ▶ Acknowledging and providing for Manawhenua aspirations
- 

Key Implementation Projects for 2012–15

- ▶ Regional Policy Statement Change 4 – Built Environment
 - ▶ Regional Land Transport Strategy and Regional Land Transport Programme
 - ▶ District Plan harmonisation
 - ▶ Hastings District Plan review
 - ▶ Hastings Medium Density Study
 - ▶ Te Awa Structure Plan
 - ▶ Jervoistown Plan Change
 - ▶ Structure plans for Arataki Extension, Lyndhurst Extension, Kaiapo Road
 - ▶ Te Awanga–Haumoana Master Plan
 - ▶ Omahu Industrial Plan Change
- 

Implementation Programme

Communication and Engagement

- ▶ Annual stakeholder meetings
- ▶ Implementation Programme and links on website
- ▶ www.hpuds.co.nz

Review

- ▶ 2016 subject to census

Question and Answer session

